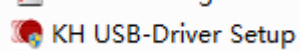
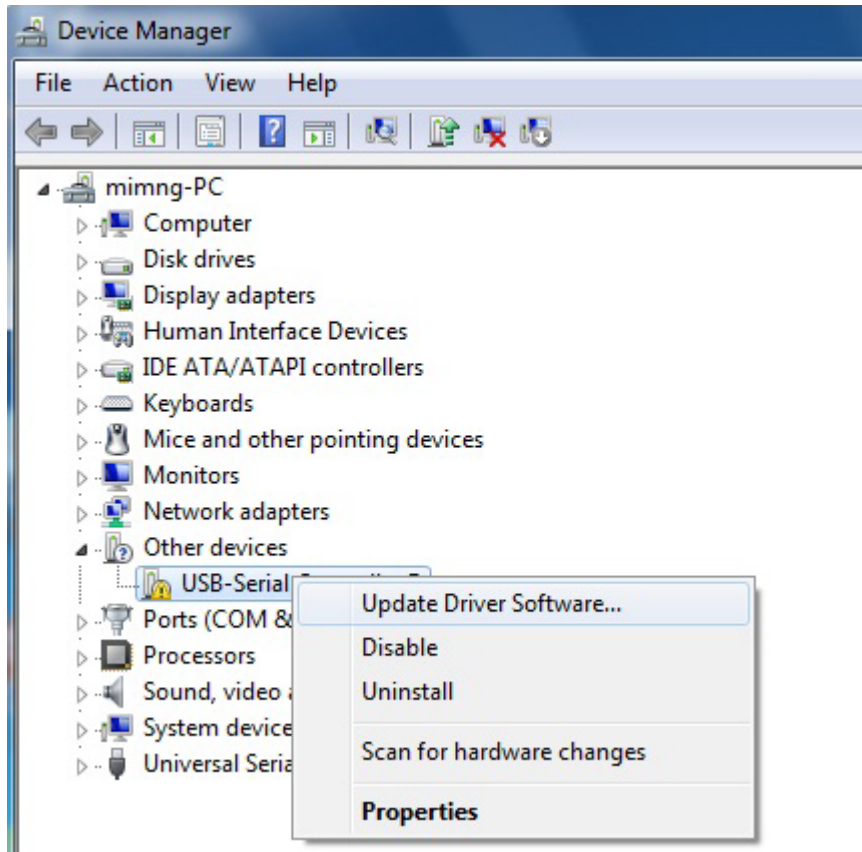


Driver installation guide

1. Install the file



2. Open the device manager, (Right click-----Update the driver)



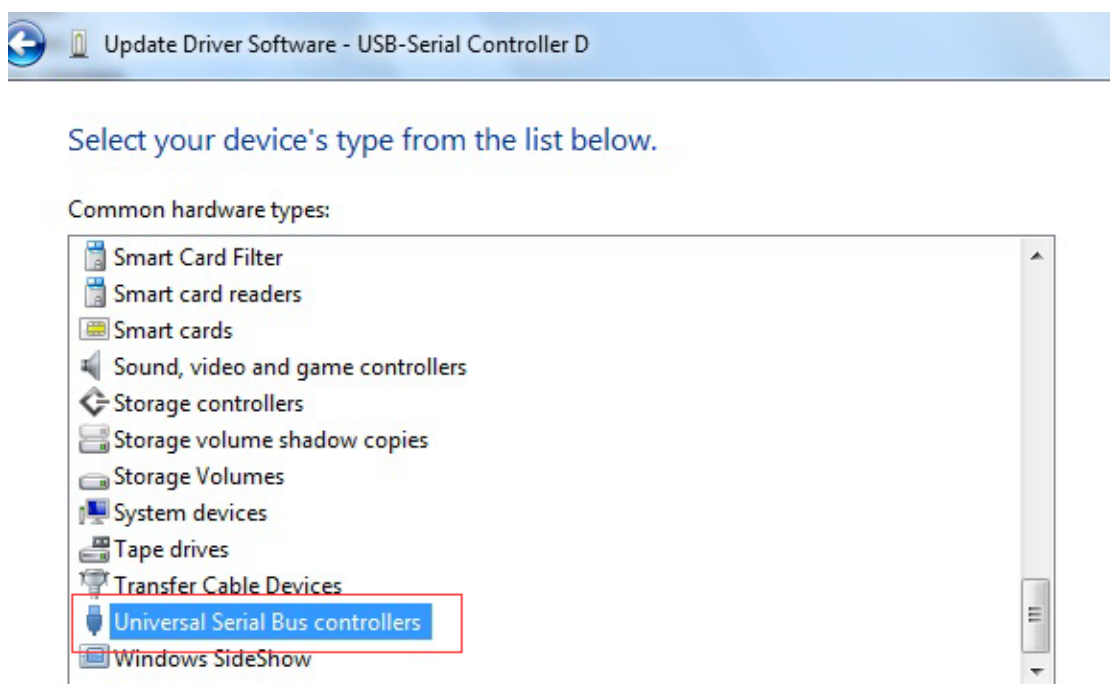
3. Choose the red areas, The next step



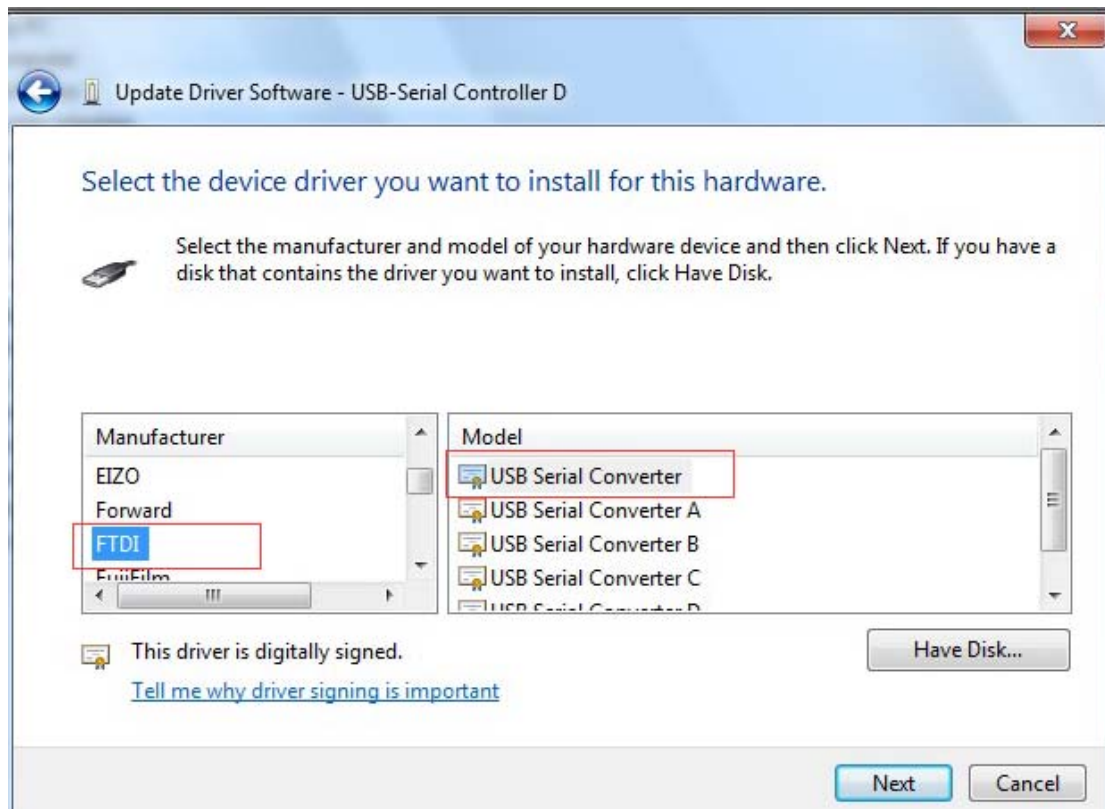
4. Choose the red areas, The next step



5. Choose the red areas, The next step



6. Choose the red areas, The next step

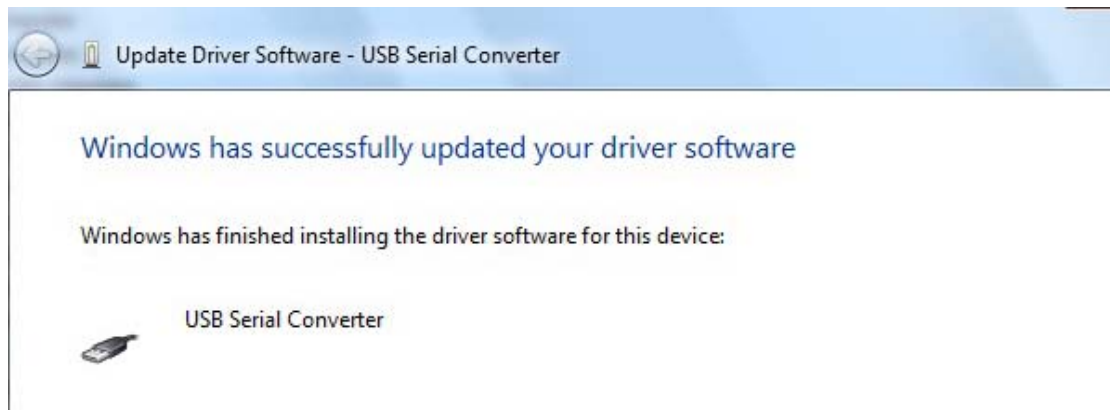


7. Choice is

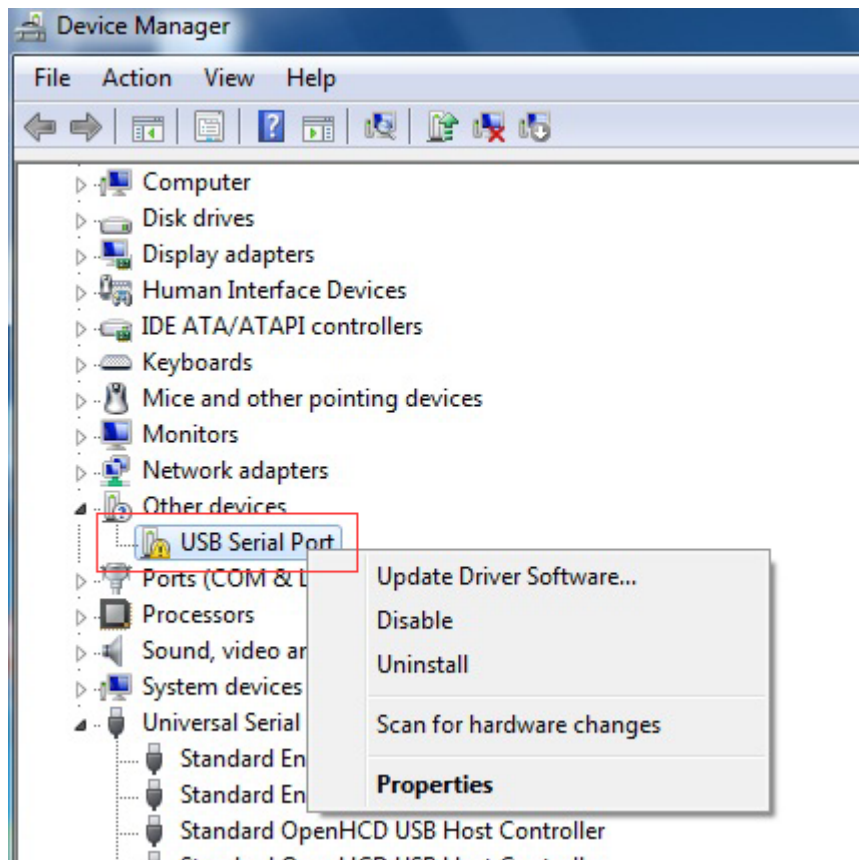
Select the manufacturer and model of your hardware device and then click Next. If you have a disk that contains the driver you want to install, click Have Disk.



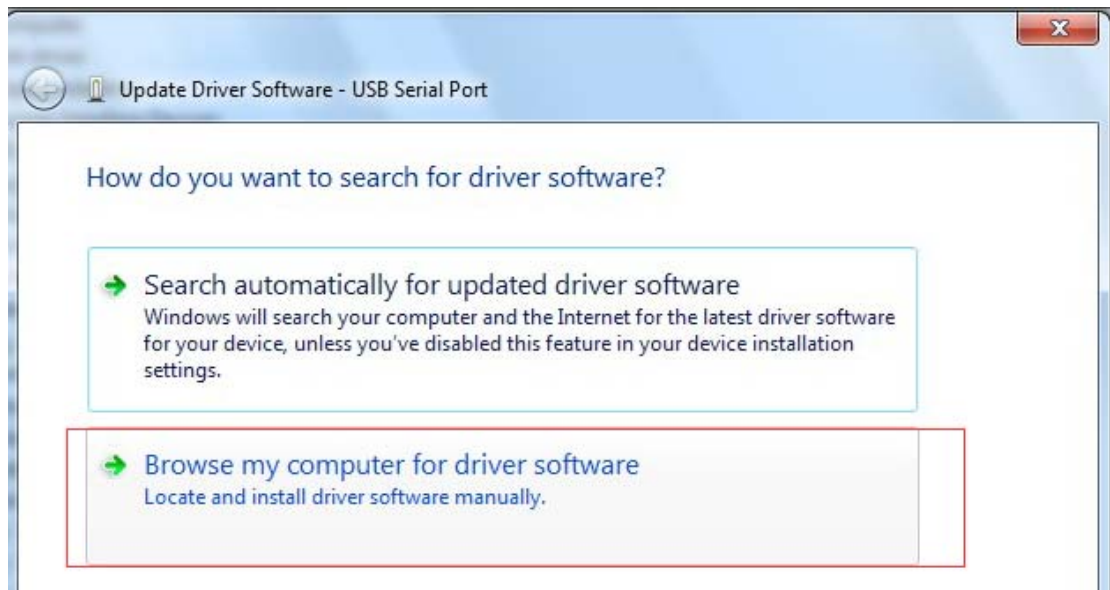
8. choose close



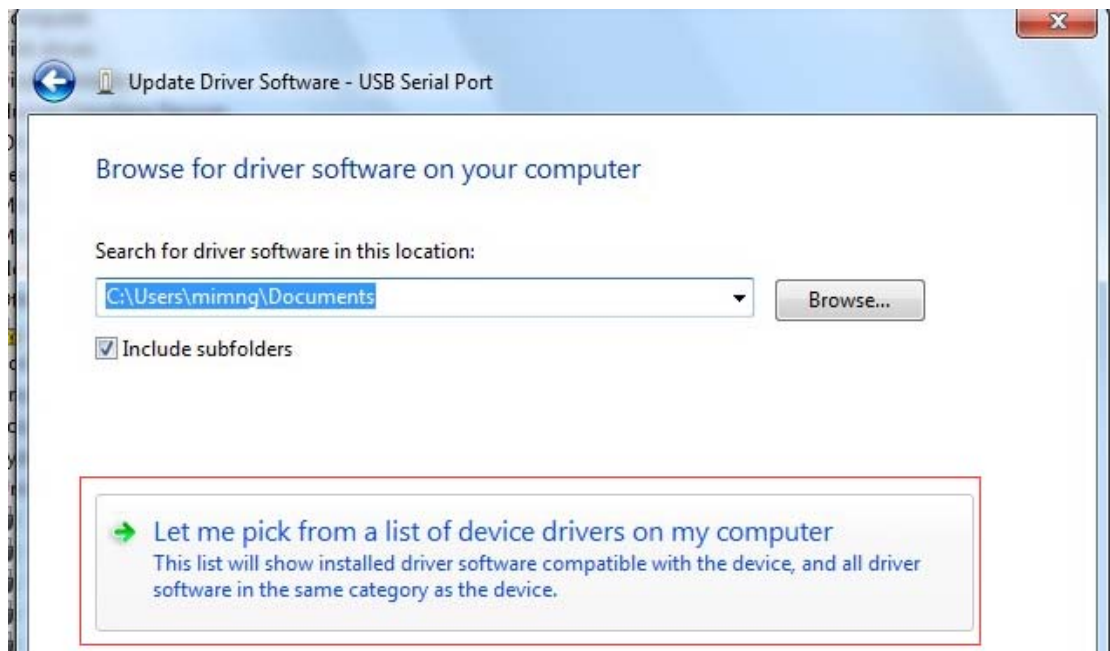
9. Open the device manager, (Right click-----Update the driver)



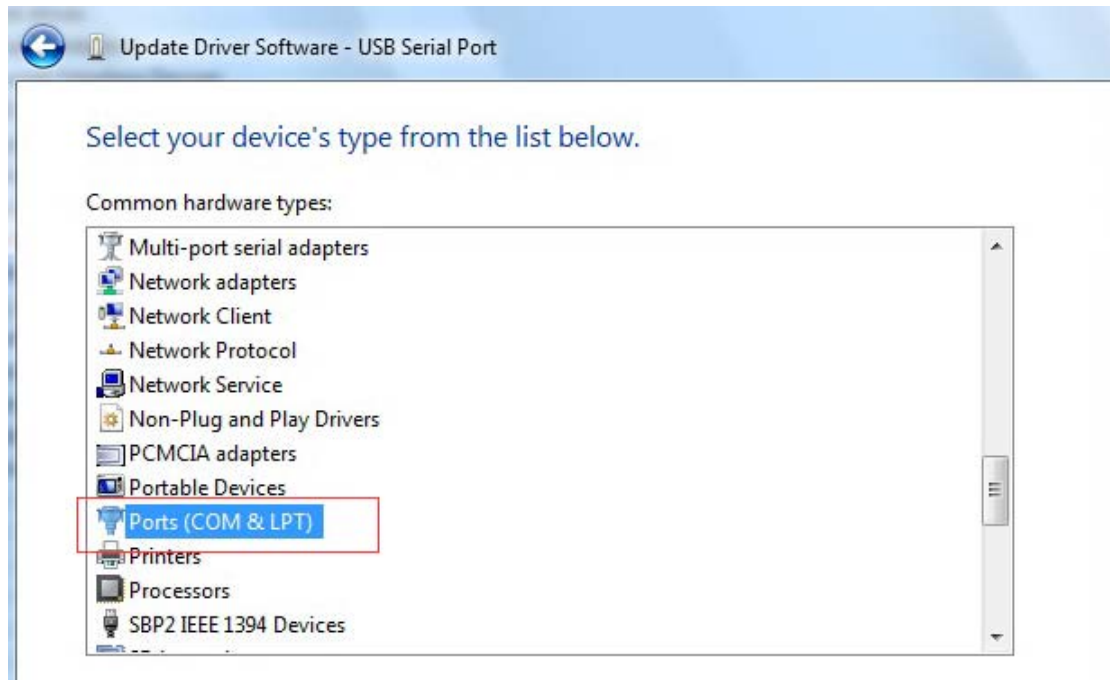
10. Choose the red areas, The next step



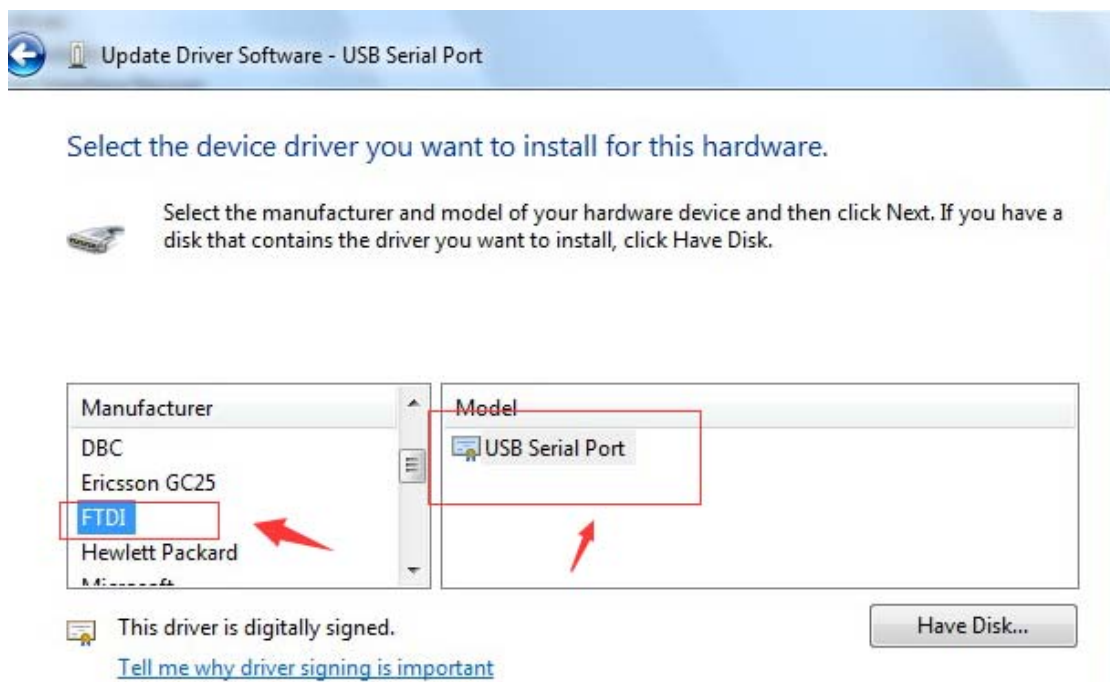
11. Choose the red areas, The next step



12. Choose the red areas, The next step



13. Choose the red areas, The next step



14. Choice is



15. Install the end



16. Port Settings, please refer to this document

